

# Renaissance Drawings from Germany and Switzerland, 1470-1600

March 27 to June 17, 2012

The J. Paul Getty Museum at the Getty Center



1. Upper Rhenish Master  
German, active about 1470 - 1490  
[Christ as Gardener](#), About 1470-90  
Pen and gray black ink  
24.1 x 10.8 cm (9 1/2 x 4 1/4 in.)  
The J. Paul Getty Museum, Los Angeles  
2003.11



2. Martin Schongauer  
German, about 1450/1453 - 1491  
[Peonies](#), About 1473  
Gouache and watercolor  
25.7 x 33 cm (10 1/8 x 13 in.)  
The J. Paul Getty Museum, Los Angeles  
92.GC.80



3. After The Master of the Housebook  
German, active about 1470 - 1500  
[Courty Scenes](#), About 1475-90  
Pen and black ink  
24.1 x 21.7 cm (9 1/2 x 8 9/16 in.)  
The J. Paul Getty Museum, Los Angeles  
2005.39



4. Unknown maker, German, 15th century  
[Mary Magdalene with Angels](#), About 1490  
Pen and black ink with white gouache highlights on  
reddish-brown grounded paper  
17 x 16.2 cm (6 11/16 x 6 3/8 in.)  
The J. Paul Getty Museum, Los Angeles  
83.GG.355



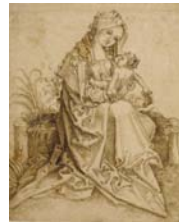
5. Master of the Coburg Roundels  
German, active about 1470 - 1500  
[Christ's Loincloth \(Recto\)](#); [Bookbinding and Christ's Loincloth \(Verso\)](#), About 1490  
Pen and brown and black ink, brown and gray wash (recto); pen and brown and black ink, brown and gray wash, heightened with white gouache (verso)  
27.9 x 20.6 cm (11 x 8 1/8 in.)  
The J. Paul Getty Museum, Los Angeles  
93.GA.10



6. Mair von Landshut  
German, about 1450 - 1504  
[Angel](#), 1498  
Black ink and white tempera highlights on gray prepared paper  
12.4 x 9.5 cm (4 7/8 x 3 3/4 in.)  
The J. Paul Getty Museum, Los Angeles  
89.GG.11



7. Hans von Kulmbach  
German, about 1480 - 1522  
[Nude Woman with a Mirror](#), About 1520  
Pen and brown ink  
17 x 10.5 cm (6 11/16 x 4 1/8 in.)  
The J. Paul Getty Museum, Los Angeles  
89.GA.6



8. Unknown maker, Nuremberg School  
[The Virgin and Child on a Grassy Bench](#), About 1500  
Pen and brown ink; strip at the top added later  
19.2 x 15.6 cm (7 9/16 x 6 1/8 in.)  
The J. Paul Getty Museum, Los Angeles  
92.GA.103



9. Albrecht Dürer  
German, 1471 - 1528  
[The Good Thief](#), About 1503-5  
Pen and brown ink  
26.8 x 12.7 cm (10 9/16 x 5 in.)  
The J. Paul Getty Museum, Los Angeles  
83.GA.360



10. Hans Baldung Grien  
German, 1484/1485 - 1545  
[Saint Vincent Ferrer Preaching the Sermon of the Last Judgement](#), About 1505  
Pen and brown ink and black chalk  
30.8 x 22.4 cm (12 1/8 x 8 13/16 in.)  
The J. Paul Getty Museum, Los Angeles  
83.GA.194



11. Jörg Breu the Elder  
German, about 1475/1476 - 1537  
[Tournament Scene](#), About 1510-15  
Pen and black ink over black chalk  
Diam.: 25.4 cm (Diam.: 10 in.)  
The J. Paul Getty Museum, Los Angeles  
89.GA.16



12. Hans von Kulmbach  
German, about 1480 - 1522  
[The Judgement of Solomon](#), About 1510-15  
Pen and brown ink and gray wash  
Diam.: 27.6 cm (Diam.: 10 7/8 in.)  
The J. Paul Getty Museum, Los Angeles  
89.GG.5



13. Hans Schüpflein  
German, 1480/1485 - 1540  
[Christ Taking Leave of His Mother](#), 1510  
Pen and brown ink and black chalk  
27.5 x 21.1 cm (10 13/16 x 8 5/16 in.)  
The J. Paul Getty Museum, Los Angeles  
85.GA.438



14. Hans Baldung Grien  
German, 1484/1485 - 1545  
[Head Studies](#), About 1512-13  
12.4 x 17.1 cm (4 7/8 x 6 3/4 in.)  
The J. Paul Getty Museum, Los Angeles  
84.GA.81



15. Albrecht Altdorfer  
German, about 1480 - 1538  
[Christ Carrying the Cross](#), About 1513  
Pen and black ink and gray wash over black chalk  
Diam.: 30.3 cm (Diam.: 11 15/16 in.)  
The J. Paul Getty Museum, Los Angeles  
86.GG.465



16. Niklaus Manuel Deutsch  
Swiss, 1484 - 1530  
[The Mocking of Christ](#), About 1513-14  
Pen and black ink with white and gold highlights on red brown prepared paper  
31.1 x 21.6 cm (12 1/4 x 8 1/2 in.)  
The J. Paul Getty Museum, Los Angeles  
84.GG.663



17. Circle of Wolf Huber  
German, 1480/1485 - 1553  
Mercenary Soldier in a Landscape, About 1515  
Pen and brown ink  
14.5 x 10.8 cm (5 11/16 x 4 1/4 in.)  
The J. Paul Getty Museum, Los Angeles  
2009.14



18. Albrecht Dürer  
German, 1471 - 1528  
Signet-Ring Design, 1516  
Pen and brown ink  
5.9 x 5.4 cm (2 5/16 x 2 1/8 in.)  
The J. Paul Getty Museum, Los Angeles  
89.GA.19



19. Hans Schwarz  
German, about 1492 - after 1521  
Profile Portrait of a Man, About 1518-20  
Black chalk  
23.8 x 18.8 cm (9 3/8 x 7 3/8 in.)  
The J. Paul Getty Museum, Los Angeles  
2002.8



20. Sebald Beham  
German, 1500 - 1550  
Standard Bearer, 1519  
Pen and black ink  
18.1 x 9.5 cm (7 1/8 x 3 3/4 in.)  
The J. Paul Getty Museum, Los Angeles  
94.GA.53



21. Sebald Beham  
German, 1500 - 1550  
Peasant Couple, About 1520  
Pen and brown ink over black chalk  
10.6 x 5.9 cm (4 3/16 x 2 5/16 in.)  
The J. Paul Getty Museum, Los Angeles  
86.GG.477



22. Sebald Beham  
German, 1500 - 1550  
Peasant Couple, About 1520  
Pen and brown ink over black chalk  
10.6 x 5.9 cm (4 3/16 x 2 5/16 in.)  
The J. Paul Getty Museum, Los Angeles  
86.GG.478



23. Lucas Cranach the Elder  
German, 1472 - 1553  
[Stag](#), About 1530-35  
Brush with brown and red brown wash, heightened with white gouache (recto)  
13.5 x 16.7 cm (5 5/16 x 6 9/16 in.)  
The J. Paul Getty Museum, Los Angeles  
84.GC.36



24. Unknown maker, Swiss  
[Mercenary Soldier](#), About 1520-30  
Pen and black ink  
19.5 x 15.6 cm (7 11/16 x 6 1/8 in.)  
The J. Paul Getty Museum, Los Angeles  
91.GA.71



25. Unknown maker, Swiss  
[Portrait of a Young Man](#), 1521  
Black chalk  
38.1 x 28.7 cm (15 x 11 5/16 in.)  
The J. Paul Getty Museum, Los Angeles  
87.GB.30



26. Sebald Beham  
German, 1500 - 1550  
[The Circumcision](#), About 1522  
Pen and brown ink, red chalk, and gray, red, and brown wash  
Diam.: 22.9 cm (Diam.: 9 in.)  
The J. Paul Getty Museum, Los Angeles  
89.GG.7



27. Urs Graf  
Swiss, about 1485 - 1527  
[Dancing Peasant Couple](#), 1525  
Pen and gray and black ink; pricked for transfer (recto);  
Rubbed with black chalk (verso)  
20.6 x 14.8 cm (8 1/8 x 5 13/16 in.)  
The J. Paul Getty Museum, Los Angeles  
92.GA.72



28. Master from Konstanz (Christoph Bockstorffer)  
Swiss, about 148? - 1553  
or Matthäus Gutrecht the Younger  
German, died 1534, active 1506  
[Scaevola Thrusting His Right Hand into Flames](#), About 1530-40  
Pen and black ink, gray and two shades of yellow wash and red chalk  
43.7 x 32.7 cm (17 3/16 x 12 7/8 in.)  
The J. Paul Getty Museum, Los Angeles  
88.GG.6



29. Hans Brosamer  
German, about 1500 - about 1554, active Erfurt and Fulda, Germany 1520 - 1546  
[Pleated and Hanging Skirts](#), About 1550  
19.7 x 14.9 cm (7 3/4 x 5 7/8 in.)  
The J. Paul Getty Museum, Los Angeles  
92.GA.2



30. Hans Brosamer  
German, about 1500 - about 1554, active Erfurt and Fulda, Germany 1520 - 1546  
[Pleated and Hanging Skirts](#), About 1550  
Pen and black ink  
19.5 x 14.9 cm (7 11/16 x 5 7/8 in.)  
The J. Paul Getty Museum, Los Angeles  
92.GA.3



31. Lucas Cranach the Elder  
German, 1472 - 1553  
[Portrait of a Young Man](#), About 1530  
Oil on paper  
26.2 x 20 cm (10 5/16 x 7 7/8 in.)  
The J. Paul Getty Museum, Los Angeles  
92.GG.91



32. Master H.B.  
German, active early 16th century  
[Saint Andrew in a Landscape](#), About 1520-30  
Pen and brown ink and gray wash  
21.1 x 15.5 cm (8 5/16 x 6 1/8 in.)  
The J. Paul Getty Museum, Los Angeles  
2007.22



33. Monogrammist AS  
German, active 1530  
[The Idolatry of Solomon](#), About 1529-30  
Pen and dark brown ink  
21.3 x 32.5 cm (8 3/8 x 12 13/16 in.)  
The J. Paul Getty Museum, Los Angeles  
89.GA.10



34. Wolf Huber  
German, 1480/1485 - 1553  
[The Conversion of Paul](#), 1531  
Pen and black ink  
18.3 x 12.9 cm (7 3/16 x 5 1/16 in.)  
The J. Paul Getty Museum, Los Angeles  
85.GA.415



35. Hans Holbein the Younger  
 German, 1497/1498 - 1543  
[Portrait of a Scholar or Cleric](#), About 1532-35  
 Black and red chalk, pen and brush and black ink, on pink prepared paper  
 21.9 x 18.5 cm (8 5/8 x 7 1/4 in.)  
 The J. Paul Getty Museum, Los Angeles  
 84.GG.93



36. Georg Pencz  
 German, 1484/1485 - 1545  
[Allegory of Justice](#), 1533  
 Pen and brown ink over black chalk  
 19.2 x 14.9 cm (7 9/16 x 5 7/8 in.)  
 The J. Paul Getty Museum, Los Angeles  
 87.GA.103



37. Virgil Solis  
 German, 1514 - 1562  
[Frieze of Grapevines](#), 1537  
 Pen and black ink, horizontal stylus indentation lines above and below the length of the design  
 10.6 x 32.4 cm (4 3/16 x 12 3/4 in.)  
 The J. Paul Getty Museum, Los Angeles  
 89.GA.21



38. Georg Pencz  
 German, 1484/1485 - 1545  
[Reclining Female Figure with the Arms of the Barons von Paar](#), About 1535  
 Pen and brown ink with gray wash (recto)  
 24.8 x 24.8 cm (9 3/4 x 9 3/4 in.)  
 The J. Paul Getty Museum, Los Angeles  
 83.GA.193



39. Heinrich Aldegrever  
 German, 1502 - about 1561  
[Lazarus Begging for Crumbs from Dives's Table](#), 1552  
 Pen and brown ink, brown wash, traces of black chalk, incised for transfer  
 7.8 x 10.8 cm (3 1/16 x 4 1/4 in.)  
 The J. Paul Getty Museum, Los Angeles  
 2000.7



40. Jost Amman  
 Swiss, 1539 - 1591  
[Officer in the Imperial Army](#), 1556  
 Pen and black ink, paper toned with black chalk  
 37.9 x 24.1 cm (14 15/16 x 9 1/2 in.)  
 The J. Paul Getty Museum, Los Angeles  
 89.GA.15



41. Monogrammist MS  
German, active 1557  
[Falconer in a Landscape](#), 1557  
Pen and black ink  
15.1 x 21 cm (5 15/16 x 8 1/4 in.)  
The J. Paul Getty Museum, Los Angeles  
89.GA.13



42. Tobias Stimmer  
Swiss, 1539 - 1584  
[Portrait of a Bearded Man](#), 1576  
Pen and black and brown ink over black chalk  
29.8 x 20.8 cm (11 3/4 x 8 3/16 in.)  
The J. Paul Getty Museum, Los Angeles  
92.GA.102



43. Daniel Lindtmayer  
Swiss, 1552 - 1602/1607  
[Job on the Dung Heap](#), 1581  
Pen and black ink, and gray wash  
39.7 x 31.4 cm (15 5/8 x 12 3/8 in.)  
The J. Paul Getty Museum, Los Angeles  
85.GA.290



44. Josias Murer II  
Swiss, 1564 - 1630  
[Orpheus Charming the Animals](#), About 1600  
Black ink and brown wash on paper  
22.9 x 18.6 cm (9 x 7 5/16 in.)  
The J. Paul Getty Museum, Los Angeles  
2001.22

