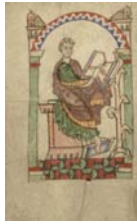


Illuminated Manuscripts from Belgium and the Netherlands

August 24, 2010 to November 7, 2010

The J. Paul Getty Museum at the Getty Center



1. Unknown

Eadmer of Canterbury Writing, about 1140 - 1150
from **Life and Conversations of Anselm of Canterbury**
Tempera colors, gold paint, and ink on parchment
Leaf: 17.8 x 10.8 cm (7 x 4 1/4 in.)
The J. Paul Getty Museum, Los Angeles
Ms. Ludwig XI 6, fol. 2v (83.MN.125.2v)



2. Unknown

Inhabited Initial Q, about 1140 - 1150
from **Life and Conversations of Anselm of Canterbury**
Tempera colors, gold paint, and ink on parchment
Leaf: 17.8 x 10.8 cm (7 x 4 1/4 in.)
The J. Paul Getty Museum, Los Angeles
Ms. Ludwig XI 6, fol. 3 (83.MN.125.3)



3. Unknown

A Man Holding Branches (April), mid-1200s
from **Psalter**
Tempera colors, gold leaf, and ink on parchment
Leaf: 23.5 x 16.5 cm (9 1/4 x 6 1/2 in.)
The J. Paul Getty Museum, Los Angeles
Ms. 14, fol. 4v (85.MK.239.4v)



4. Unknown

A Man Hunting (May), mid-1200s
from **Psalter**
Tempera colors, gold leaf, and ink on parchment
Leaf: 23.5 x 16.5 cm (9 1/4 x 6 1/2 in.)
The J. Paul Getty Museum, Los Angeles
Ms. 14, fol. 5 (85.MK.239.5)



5. Unknown

[A Siren and a Centaur](#), about 1270

from [Bestiary](#)

Tempera colors, gold leaf, and ink on parchment

Leaf: 19.1 x 14.3 cm (7 1/2 x 5 5/8 in.)

The J. Paul Getty Museum, Los Angeles

Ms. Ludwig XV 3, fol. 78 (83.MR.173.78)



6. Masters of Dirc van Delf

Dutch, active about 1400 - about 1410

[The Entombment](#), about 1405 - 1410

from [Book of Hours](#)

Tempera colors, gold leaf, and ink on parchment

Leaf: 16.5 x 11.7 cm (6 1/2 x 4 5/8 in.)

The J. Paul Getty Museum, Los Angeles

Ms. 40, fol. 79v (90.ML.139.79v)



7. Unknown

Decorated Initial C, about 1405 - 1410

from [Book of Hours](#)

Tempera colors, gold leaf, and ink on parchment

Leaf: 16.5 x 11.7 cm (6 1/2 x 4 5/8 in.)

The J. Paul Getty Museum, Los Angeles

Ms. 40, fol. 80 (90.ML.139.80)



8. Workshop of Master of Jean Chevrot

[The Trinity](#), 1450s

from [Llangattock Hours](#)

Tempera colors, gold leaf, gold paint, and ink on parchment

Leaf: 26.4 x 18.4 cm (10 3/8 x 7 1/4 in.)

The J. Paul Getty Museum, Los Angeles

Ms. Ludwig IX 7, fol. 25v (83.ML.103.25v)



9. Unknown

[Decorated Text Page](#), 1450s

from [Llangattock Hours](#)

Tempera colors, gold leaf, gold paint, and ink on parchment

Leaf: 26.4 x 18.4 cm (10 3/8 x 7 1/4 in.)

The J. Paul Getty Museum, Los Angeles

Ms. Ludwig IX 7, fol. 26 (83.ML.103.26)



10. Master of Guillebert de Mets

Flemish, active about 1410 - 1450

[The Virgin and Child with Angels](#), about 1450 - 1455

from [Book of Hours](#)

Tempera colors, gold leaf, and ink on parchment

Leaf: 19.4 x 14 cm (7 5/8 x 5 1/2 in.)

The J. Paul Getty Museum, Los Angeles

Ms. 2, fol. 37v (84.ML.67.37v)



11. Master of the Lee Hours
 Flemish, active about 1450 - 1470
[The Virgin and Child with Angels](#), about 1450 - 1455
 from [Book of Hours](#)
 Tempera colors, gold leaf, and ink on parchment
 Leaf: 19.4 x 14 cm (7 5/8 x 5 1/2 in.)
 The J. Paul Getty Museum, Los Angeles
 Ms. 2, fol. 38 (84.ML.67.38)



12. Dieric Bouts
 Netherlandish, about 1415 - 1475
[The Annunciation](#), about 1450 - 1455
 Distemper on linen
 Unframed: 90 x 74.5 cm (35 7/16 x 29 3/8 in.)
 The J. Paul Getty Museum, Los Angeles
 85.PA.24



13. Willem Vrelant
 Flemish, died 1481, active 1454 - 1481
[The Adoration of the Eucharist](#), early 1460s
 from [Arenberg Hours](#)
 Tempera colors, gold leaf, and ink on parchment
 Leaf: 25.6 x 17.3 cm (10 1/16 x 6 13/16 in.)
 The J. Paul Getty Museum, Los Angeles
 Ms. Ludwig IX 8, fol. 144 (83.ML.104.144)



14. Unknown
 A Male Saint Presenting the Patron to Saint Margaret,
 after 1460
 from Book of Hours
 Tempera colors, gold leaf, and ink on parchment
 Leaf: 17.1 x 12.2 cm (6 3/4 x 4 13/16 in.)
 The J. Paul Getty Museum, Los Angeles
 Ms. Ludwig IX 9, fol. 13v (83.ML.105.13v)



15. Master of Evert Zoudenbalch
 Dutch, active 3rd quarter of 15th century
 The Coronation of the Virgin by the Trinity, about 1460
 from Book of Hours
 Tempera and gold leaf
 Leaf: 16.4 x 11.7 cm (6 7/16 x 4 5/8 in.)
 The J. Paul Getty Museum, Los Angeles
 Ms. Ludwig IX 10, fol. 15v (83.ML.106.15v)



16. Master of Evert Zoudenbalch
 Dutch, active 3rd quarter of 15th century
 Initial H: The Annunciation, about 1460
 from Book of Hours
 Tempera and gold leaf
 Leaf: 16.4 x 11.7 cm (6 7/16 x 4 5/8 in.)
 The J. Paul Getty Museum, Los Angeles
 Ms. Ludwig IX 10, fol. 16 (83.ML.106.16)



17. Loyset Liédet
Flemish, active about 1448 - 1478
and Pol Fruit
Flemish, active about 1468
[The Abduction of Ydoire](#), written 1463 - 1465;
illuminated 1467 - 1472
Cutting from History of Charles Martel
Tempera colors, gold leaf, and gold paint on parchment
Leaf: 23.2 x 18.8 cm (9 1/8 x 7 3/8 in.)
The J. Paul Getty Museum, Los Angeles
Ms. Ludwig XIII 6, leaf 1 (83.MP.149.1.recto)



18. Master of the Brussels Romuléon or workshop
Flemish
[Scenes from the Legend of Saint Anthony](#), about 1465 - 1470
from [Discovery and Translation of the Body of Saint Anthony](#)
Tempera colors, gold leaf, gold paint, and ink on parchment
Leaf: 24.8 x 17.6 cm (9 3/4 x 6 15/16 in.)
The J. Paul Getty Museum, Los Angeles
Ms. Ludwig XI 8, fol. 10v (83.MN.127.10v)



19. Unknown
[Decorated Text Page](#), 1469
from [Prayer Book of Charles the Bold](#)
Tempera colors, gold leaf, gold paint, silver paint, and ink on parchment
Leaf: 12.4 x 9.2 cm (4 7/8 x 3 5/8 in.)
The J. Paul Getty Museum, Los Angeles
Ms. 37, fol. 32v (89.ML.35.32v)



20. Lieven van Lathem
Flemish, about 1430 - 1493, active 1454 - 1493
[The Temptation of Saint Anthony](#), 1469
from [Prayer Book of Charles the Bold](#)
Tempera colors, gold leaf, gold paint, silver paint, and ink on parchment
Leaf: 12.4 x 9.2 cm (4 7/8 x 3 5/8 in.)
The J. Paul Getty Museum, Los Angeles
Ms. 37, fol. 33 (89.ML.35.33)



21. Unknown
Solomon and the Queen of Sheba, about 1475
from [Mirror of History](#)
Tempera colors, gold leaf, and gold paint on parchment
Leaf: 43.8 x 30.5 cm (17 1/4 x 12 in.)
The J. Paul Getty Museum, Los Angeles
Ms. Ludwig XIII 5, v1, fol. 126 (83.MP.148.1.126)



22. Unknown
[Text Page](#), 1475
from [The Visions of the Knight Tondal](#)
Tempera colors, gold leaf, gold paint, and ink on parchment
Leaf: 36.3 x 26.2cm (14 5/16 x 10 5/16 in.)
The J. Paul Getty Museum, Los Angeles
Ms. 30, fol. 26v (87.MN.141.26.26v)



23. Simon Marmion
Flemish, active 1450 - 1489
[The Valley of Fires](#), 1475
from [The Visions of the Knight Tondal](#)
Tempera colors, gold leaf, gold paint, and ink on parchment
Leaf: 36.3 x 26.2 cm (14 5/16 x 10 5/16 in.)
The J. Paul Getty Museum, Los Angeles
Ms. 30, fol. 27 (87.MN.141.27.27)



24. Master of the Getty Froissart
Flemish, active about 1475 - 1485
[The English Besieging La Rochelle](#), about 1480 - 1483
from [Chronicles \(Book Three\)](#)
Tempera colors, gold leaf, gold paint, and ink on parchment
Leaf: 48 x 35 cm (18 7/8 x 13 3/4 in.)
The J. Paul Getty Museum, Los Angeles
Ms. Ludwig XIII 7, fol. 314 (83.MP.150.314)



25. Master of the Dresden Prayer Book or workshop
Flemish, active about 1480 - 1515
[The Virgin and Child Enthroned](#), about 1480 - 1485 ?
from [Crohin-La Fontaine Hours](#)
Tempera colors and gold on parchment
Leaf: 20.5 x 14.8 cm (8 1/16 x 5 13/16 in.)
The J. Paul Getty Museum, Los Angeles
Ms. 23, fol. 29v (86.ML.606.29v)



26. Unknown
[Decorated Initial S](#), about 1480 - 1485 ?
from [Crohin-La Fontaine Hours](#)
Tempera colors and gold on parchment
Leaf: 20.5 x 14.8 cm (8 1/16 x 5 13/16 in.)
The J. Paul Getty Museum, Los Angeles
Ms. 23, fol. 30 (86.ML.606.30)



27. Unknown
Text Page with a Decorated Border, about 1480 - 1490
Leaf from a Book of Hours
Tempera colors and gold on parchment
Leaf: 12.4 x 9.2 cm (4 7/8 x 3 5/8 in.)
The J. Paul Getty Museum, Los Angeles
Ms. 45, recto (92.MS.34.recto)



28. Simon Bening
Flemish, about 1483 - 1561
[The Arrest of Christ](#), about 1525 - 1530
from [Prayer Book of Cardinal Albrecht of Brandenburg](#)
Tempera colors, gold paint, and gold leaf on parchment
Leaf: 16.8 x 11.4 cm (6 5/8 x 4 1/2 in.)
The J. Paul Getty Museum, Los Angeles
Ms. Ludwig IX 19, fol. 107v (83.ML.115.107v)



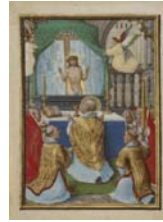
29. Simon Bening
 Flemish, about 1483 - 1561
[Border with the Arrest of Achior](#), about 1525 - 1530
 from [Prayer Book of Cardinal Albrecht of Brandenburg](#)
 Tempera colors, gold paint, and gold leaf on parchment
 Leaf: 16.8 x 11.4 cm (6 5/8 x 4 1/2 in.)
 The J. Paul Getty Museum, Los Angeles
 Ms. Ludwig IX 19, fol. 108 (83.ML.115.108)



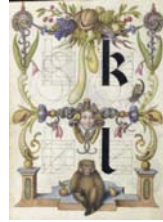
31. Simon Bening
 Flemish, about 1483 - 1561
[Villagers on Their Way to Church](#), about 1550
 from [Calendar Miniatures from a Book of Hours](#)
 Tempera colors and gold paint on parchment
 Leaf [cutting]: 5.6 x 9.6 cm (2 3/16 x 3 3/4 in.)
 The J. Paul Getty Museum, Los Angeles
 Ms. 50, recto (93.MS.19.recto)



33. Joris Hoefnagel
 Flemish / Hungarian, 1542 - 1600
 Guide for Constructing the Letters m and n, about 1591 - 1596
 from [Model Book of Calligraphy](#)
 Watercolors, gold and silver paint, and ink on parchment
 Leaf: 16.6 x 12.4 cm (6 9/16 x 4 7/8 in.)
 The J. Paul Getty Museum, Los Angeles
 Ms. 20, fol. 145 (86.MV.527.145)



30. Simon Bening
 Flemish, about 1483 - 1561
[The Mass of Saint Gregory](#), about 1535 - 1540
 Leaf from the Munich-Montserrat Hours
 Tempera colors, gold paint, and ink on parchment
 Leaf: 13.7 x 10 cm (5 3/8 x 3 15/16 in.)
 The J. Paul Getty Museum, Los Angeles
 Ms. 3, leaf 1v (84.ML.83.1.verso)



32. Joris Hoefnagel
 Flemish / Hungarian, 1542 - 1600
 Guide for Constructing the Letters k and l, about 1591 - 1596
 from [Model Book of Calligraphy](#)
 Watercolors, gold and silver paint, and ink on parchment
 Leaf: 16.6 x 12.4 cm (6 9/16 x 4 7/8 in.)
 The J. Paul Getty Museum, Los Angeles
 Ms. 20, fol. 144v (86.MV.527.144v)